

# Who can help?

## Landowner technical assistance from the Uwharries to the Sandhills

A wide range of technical assistance is available to landowners to help manage forests. The first step is to have a resource professional visit your property and write a plan based on your objectives.

### N.C. Forest Service

The county ranger is the key contact for services offered by the N.C. Forest Service (NCFS). Foresters and rangers can prepare a woodland plan tailored to your management goals.

County	Phone	E-mail
Stanly	704-848-4705	anson.ncfs@ncagr.gov
Montgomery	910-576-5481	montgomery.ncfs@ncagr.gov
Moore	910-235-0216	moore.ncfs@ncagr.gov
Richmond	910-582-7029	richmond.ncfs@ncagr.gov

Information about fees, if applicable, for woodland plan preparation is available at [www.ncforestservice.gov](http://www.ncforestservice.gov). There are no fees associated with verbal forest management assistance for insect infestations, disease and water quality concerns.

### Prescribed burn resources

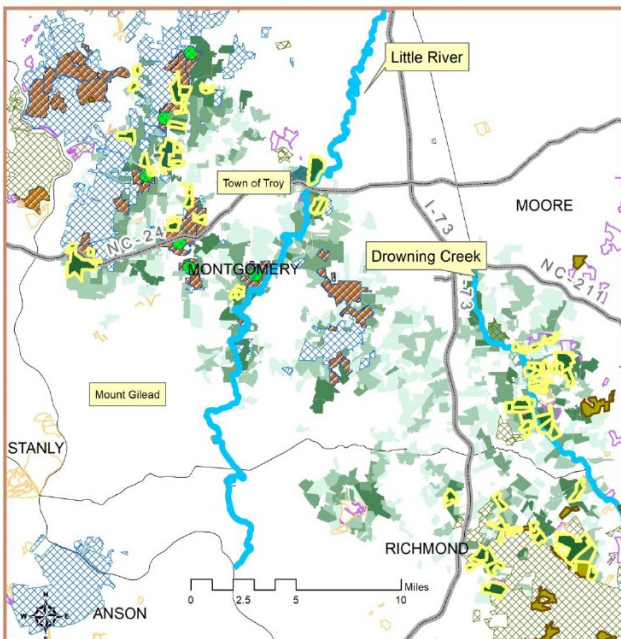
The Sandhills Prescribed Burn Association (PBA) is a community based organization connecting private landowners and interested citizens to a prescribed fire network. PBA benefits include burn training, equipment access and insurance at reduced cost.

Jesse Wimberley  
Sandhills PBA Coordinator  
910-603-1052  
[jesse@sandhillspba.org](mailto:jesse@sandhillspba.org)

The NCFS offers prescribed fire services, including site preparation burning, in-stand burning and fireline construction. Rates are based on acreage and equipment use. Contact your county ranger for more information.

For a list of private service providers, including prescribed burning contractors, that can help landowners, please visit: <https://www.nclongleaf.org/landowners.html>

Uwharrie to Sandhills Landscape Collaborative



### N.C. Wildlife Resources Commission

Technical assistance biologists provide wildlife management advice and expertise to private landowners. Wildlife Management District 6 covers Moore, Richmond, Montgomery, Stanly, Anson, Union, Mecklenburg, Cabarrus, Rowan and Davidson counties.

#### **District Biologist**

Rupert Medford  
910-220-2677  
[Rupert.Medford@ncwildlife.gov](mailto:Rupert.Medford@ncwildlife.gov)

#### **Conservation Biologist**

Greg Queen  
336-964-6607  
[Gregory.Queen@ncwildlife.gov](mailto:Gregory.Queen@ncwildlife.gov)

## U.S. Fish and Wildlife Service

The Partners for Fish and Wildlife Program provides technical and financial assistance to restore habitat for the benefit of migratory birds and rare species ([www.fws.gov/partners](http://www.fws.gov/partners)).

Luke Lolies  
252-256-3676  
[Luke\\_Lolies@fws.gov](mailto:Luke_Lolies@fws.gov)

The Safe Harbor Program is a landowner incentive program that benefits red-cockaded woodpeckers through voluntary habitat improvements. It provides regulatory assurance that no additional land restrictions will be imposed as a result of management actions. It is available to cover all non-federal lands east of NC Highway 29 and Interstate 85.

John Carpenter  
910-742-7231  
[John.Carpenter@ncwildlife.gov](mailto:John.Carpenter@ncwildlife.gov)

## U.S. Department of Agriculture

The Farm Service Agency (FSA) and Natural Resource Conservation Service (NRCS) provide cost share assistance programs for longleaf pine establishment and management.

County	FSA Service Center	NRCS Office
Stanly	704-982-5114 X 2	704-982-5114
Montgomery	919-775-3407 X 2	704-982-5114
Moore	919-775-3407 X 2	910-947-5183
Richmond	910-895-3950 X 2	910-895-3950

Don't see your county? Find your FSA/NRCS county office here:  
<https://offices.sc.usda.gov/locator/app>

## Quail Forever

Quail Forever works with landowners for anything conservation and wildlife related, specifically assisting with developing and funding habitat improvement projects through Farm Bill Programs offered by NRCS and FSA.

Hackney Deans  
910-840-0924  
[jdeans@quailforever.org](mailto:jdeans@quailforever.org)

## N.C. Cooperative Extension Forestry

N.C. Cooperative Extension offers research based information and technical assistance to landowners on a wide range of natural resource management topics. The Forestry Area Specialized Agent (ASA) provides assistance to landowners concerning longleaf management, pine straw production, marketing and forest health. For more information visit: [forestry.ces.ncsu.edu](http://forestry.ces.ncsu.edu)

Colby Lambert  
919-814-6041  
[colby\\_lambert@ncsu.edu](mailto:colby_lambert@ncsu.edu)

## Consulting foresters

Consulting foresters provide services on a fee or contractual basis. While the NCFS and other public agencies can provide some free advice and assistance for managing your forestland, there are limitations. If you wish to know the value of your timber or how much timber volume you have, a public agency staff person cannot provide this service. Forest owners are encouraged to obtain the services of a consulting forester.

A list of consulting foresters who conduct business in North Carolina is maintained on by the NCFS at:  
<https://www.nclongleaf.org/landowners.html>

## Online resources:

North Carolina Longleaf Coalition  
[www.nclongleaf.org](http://www.nclongleaf.org)

Sandhills Conservation Partnership  
[www.ncscp.org](http://www.ncscp.org)

Sandhills Prescribed Burn Association  
[www.sandhillspba.org](http://www.sandhillspba.org)

N.C. Forest Service Claridge Nursery  
[www.buynctrees.com](http://www.buynctrees.com)  
1-888-NCTREES (628-7337)



N.C. Department of Agriculture and Consumer Services  
Steve Troxler, Commissioner

The North Carolina Forest Service is an equal opportunity / affirmative action employer. Its programs, activities and employment practices are available to all people regardless of race, color, religion, sex, age, national origin, handicap or political affiliation.



12/16/2025